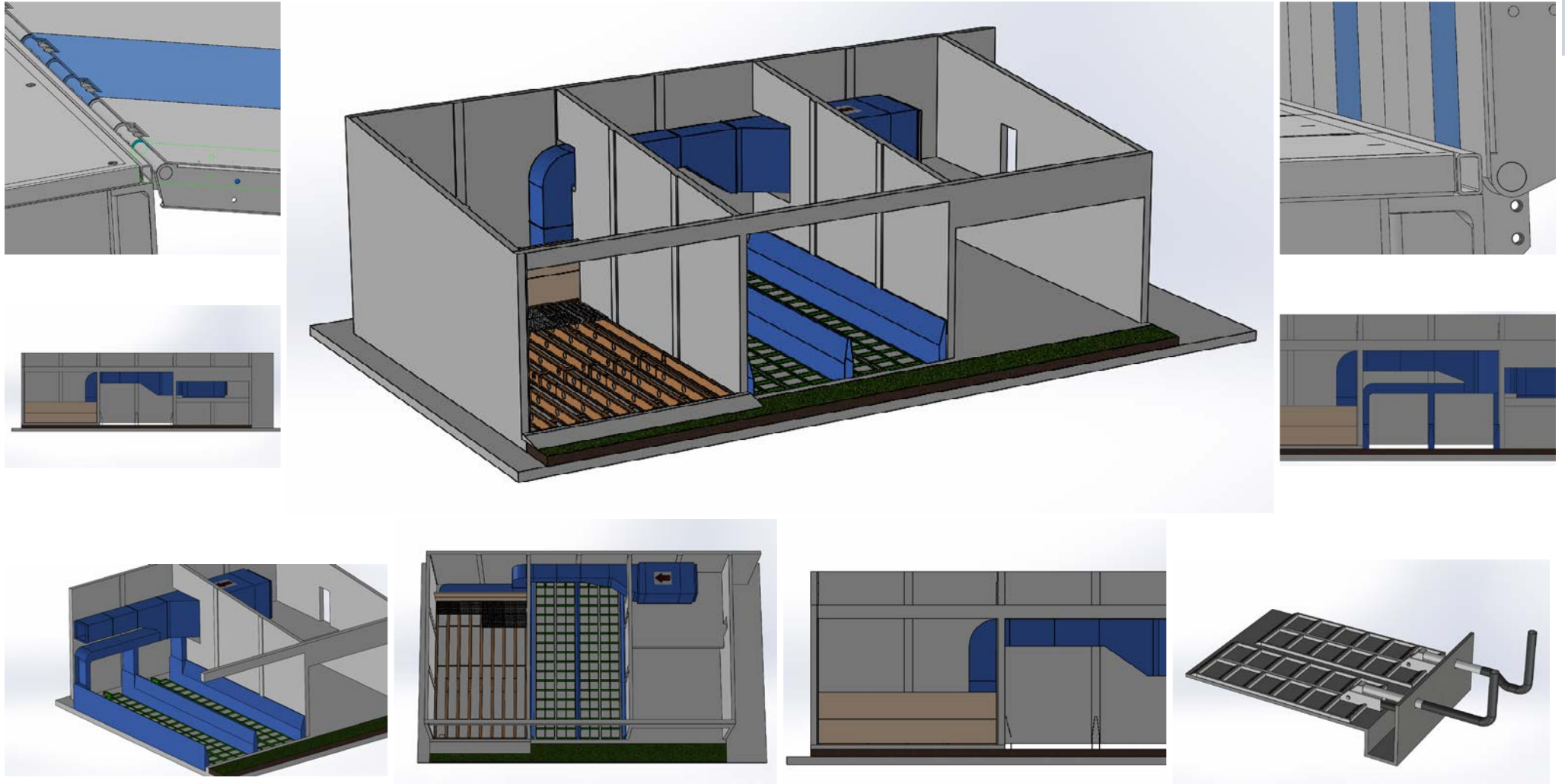




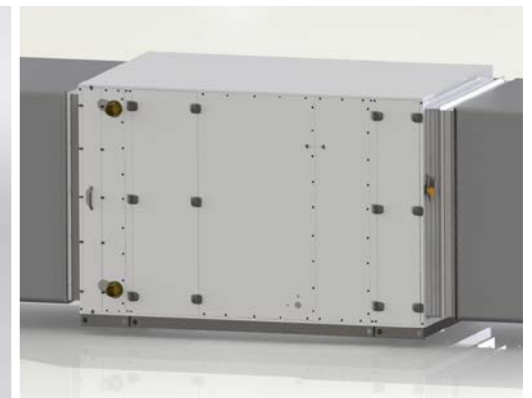
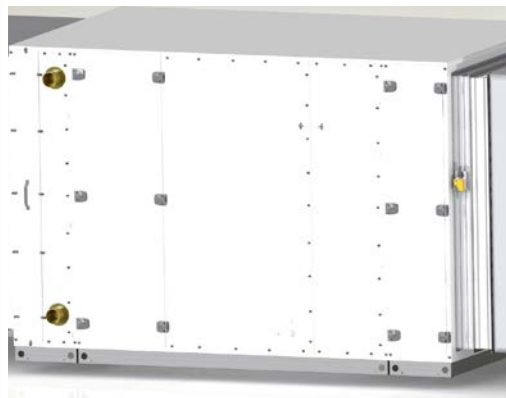
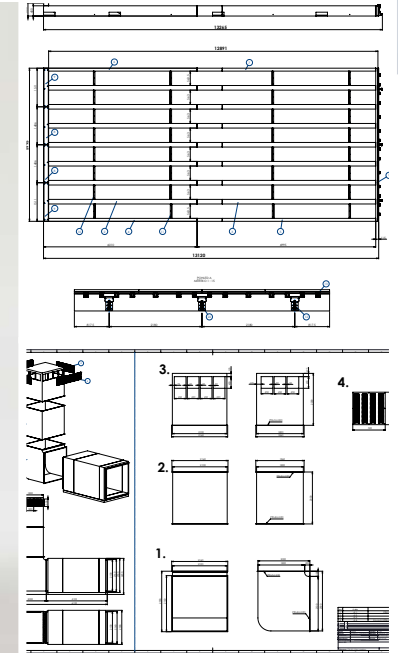
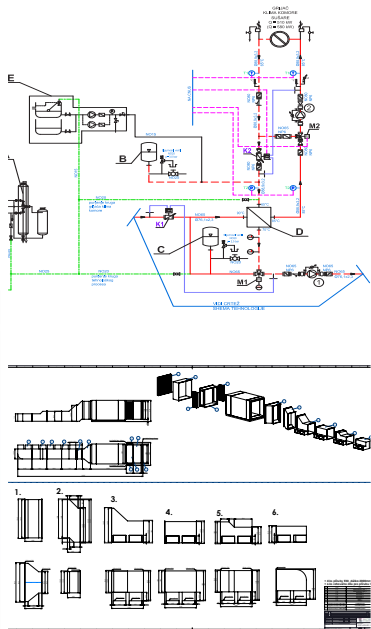
### SMART REFERENCE LIST | SMART WOOD CHIPS DRYER 560 KW

SMART HOT-WATER – HOT-AIR AIR HANDLING UNIT 560 KW, AIR FLOW 32 000 M<sup>3</sup>/H, AIR TEMPERATURE WORKING RANGE 30/81,4°C, WATER FLOW 26,01 M<sup>3</sup>/H, WATER TEMPERATURE WORKING RANGE 85/65°C, ETHYLENE-GLYCOL MIXTURE 30%, 13 120 MM X 5 995 MM GALVANIZED STEEL STRUCTURE, 10 TONS / M<sup>2</sup> WEIGHT CAPACITY, SPECIAL PERFORATED PLATES, CORNER PLATES, WALL PROTECTION BARRIERS, MOISTURE-EXHAUSTING WALL FANS, FIRE-PROOF FLAPS, TEMPERATURE SENSORS, MOISTURE SENSORS, REMOTE ICLLOUD MONITORING VIROVITICA, CROATIA



**SMART REFERENCE LIST | SMART WOOD CHIPS DRYER 560 KW**

SMART HOT-WATER – HOT-AIR AIR HANDLING UNIT 560 KW, AIR FLOW 32 000 M<sup>3</sup>/H, AIR TEMPERATURE WORKING RANGE 30/81,4°C, WATER FLOW 26,01 M<sup>3</sup>/H, WATER TEMPERATURE WORKING RANGE 85/65°C, ETHYLENE-GLYCOL MIXTURE 30%, 13 120 MM X 5 995 MM GALVANIZED STEEL STRUCTURE, 10 TONS / M<sup>2</sup> WEIGHT CAPACITY, SPECIAL PERFORATED PLATES, CORNER PLATES, WALL PROTECTION BARRIERS, MOISTURE-EXHAUSTING WALL FANS, FIRE-PROOF FLAPS, TEMPERATURE SENSORS, MOISTURE SENSORS, REMOTE Icloud MONITORING VIROVITICA, CROATIA





### SMART REFERENCE LIST | SMART WOOD CHIPS DRYER 560 KW

SMART HOT-WATER – HOT-AIR AIR HANDLING UNIT 560 KW, AIR FLOW 32 000 M<sup>3</sup>/H, AIR TEMPERATURE WORKING RANGE 30/81,4°C, WATER FLOW 26,01 M<sup>3</sup>/H, WATER TEMPERATURE WORKING RANGE 85/65°C, ETHYLENE-GLYCOL MIXTURE 30%, 13 120 MM X 5 995 MM GALVANIZED STEEL STRUCTURE, 10 TONS / M<sup>2</sup> WEIGHT CAPACITY, SPECIAL PERFORATED PLATES, CORNER PLATES, WALL PROTECTION BARRIERS, MOISTURE-EXHAUSTING WALL FANS, FIRE-PROOF FLAPS, TEMPERATURE SENSORS, MOISTURE SENSORS, REMOTE Icloud MONITORING VIROVITICA, CROATIA



**SMART REFERENCE LIST | SMART WOOD CHIPS DRYER 560 KW**

SMART HOT-WATER – HOT-AIR AIR HANDLING UNIT 560 KW, AIR FLOW 32 000 M<sup>3</sup>/H, AIR TEMPERATURE WORKING RANGE 30/81,4°C, WATER FLOW 26,01 M<sup>3</sup>/H, WATER TEMPERATURE WORKING RANGE 85/65°C, ETHYLENE-GLYCOL MIXTURE 30%, 13 120 MM X 5 995 MM GALVANIZED STEEL STRUCTURE, 10 TONS / M<sup>2</sup> WEIGHT CAPACITY, SPECIAL PERFORATED PLATES, CORNER PLATES, WALL PROTECTION BARRIERS, MOISTURE-EXHAUSTING WALL FANS, FIRE-PROOF FLAPS, TEMPERATURE SENSORS, MOISTURE SENSORS, REMOTE Icloud MONITORING VIROVITICA, CROATIA



**SMART REFERENCE LIST | SMART WOOD CHIPS DRYER 560 KW**

SMART HOT-WATER – HOT-AIR AIR HANDLING UNIT 560 KW, AIR FLOW 32 000 M<sup>3</sup>/H, AIR TEMPERATURE WORKING RANGE 30/81,4°C, WATER FLOW 26,01 M<sup>3</sup>/H, WATER TEMPERATURE WORKING RANGE 85/65°C, ETHYLENE-GLYCOL MIXTURE 30%, 13 120 MM X 5 995 MM GALVANIZED STEEL STRUCTURE, 10 TONS / M<sup>2</sup> WEIGHT CAPACITY, SPECIAL PERFORATED PLATES, CORNER PLATES, WALL PROTECTION BARRIERS, MOISTURE-EXHAUSTING WALL FANS, FIRE-PROOF FLAPS, TEMPERATURE SENSORS, MOISTURE SENSORS, REMOTE Icloud MONITORING VIROVITICA, CROATIA





### SMART REFERENCE LIST | SMART WOOD CHIPS DRYER 560 KW

SMART HOT-WATER – HOT-AIR AIR HANDLING UNIT 560 KW, AIR FLOW 32 000 M<sup>3</sup>/H, AIR TEMPERATURE WORKING RANGE 30/81,4°C, WATER FLOW 26,01 M<sup>3</sup>/H, WATER TEMPERATURE WORKING RANGE 85/65°C, ETHYLENE-GLYCOL MIXTURE 30%, 13 120 MM X 5 995 MM GALVANIZED STEEL STRUCTURE, 10 TONS / M<sup>2</sup> WEIGHT CAPACITY, SPECIAL PERFORATED PLATES, CORNER PLATES, WALL PROTECTION BARRIERS, MOISTURE-EXHAUSTING WALL FANS, FIRE-PROOF FLAPS, TEMPERATURE SENSORS, MOISTURE SENSORS, REMOTE ICloud MONITORING VIROVITICA, CROATIA



**SMART REFERENCE LIST | SMART SELF-DRYING CABIN 500 KW 2016/  
SMART SELF-DRYING KINGSPAN PANEL CABIN 500 KW 2017**

MULTI-FUEL SILO DESIGN WITH HYDRAULIC ROOF WITH AUTOMATIC DRYING SILO FLOOR WITH COMPLETE REGULATION  
DRYING FACILITY, AMMANDFORD, WALES



**SMART REFERENCE LIST | SMART SELF-DRYING CABIN 500 KW 2016/  
SMART SELF-DRYING KINGSPAN PANEL CABIN 500 KW 2017**

MULTI-FUEL SILO DESIGN WITH HYDRAULIC ROOF WITH AUTOMATIC DRYING SILO FLOOR WITH COMPLETE REGULATION  
DRYING FACILITY, AMMANDFORD, WALES





**SMART REFERENCE LIST | SMART SELF-DRYING CABIN 500 KW 2016/  
SMART SELF-DRYING KINGSPAN PANEL CABIN 500 KW 2017**

MULTI-FUEL SILO DESIGN WITH HYDRAULIC ROOF WITH AUTOMATIC DRYING SILO FLOOR WITH COMPLETE REGULATION  
DRYING FACILITY, AMMANDFORD, WALES



**SMART REFERENCE LIST | SMART SELF-DRYING CABIN 500 KW 2016/  
SMART SELF-DRYING KINGSPAN PANEL CABIN 500 KW 2017**

MULTI-FUEL SILO DESIGN WITH HYDRAULIC ROOF WITH AUTOMATIC DRYING SILO FLOOR WITH COMPLETE REGULATION  
DRYING FACILITY, AMMANDFORD, WALES



**SMART REFERENCE LIST | SMART SELF-DRYING CABIN 500 KW 2016/  
SMART SELF-DRYING KINGSPAN PANEL CABIN 500 KW 2017**

MULTI-FUEL SILO DESIGN WITH HYDRAULIC ROOF WITH AUTOMATIC DRYING SILO FLOOR WITH COMPLETE REGULATION  
DRYING FACILITY, AMMANDFORD, WALES



**SMART REFERENCE LIST | SMART SELF-DRYING CABIN 500 KW 2016/  
SMART SELF-DRYING KINGSPAN PANEL CABIN 500 KW 2017**

MULTI-FUEL SILO DESIGN WITH HYDRAULIC ROOF WITH AUTOMATIC DRYING SILO FLOOR WITH COMPLETE REGULATION  
DRYING FACILITY, AMMANDFORD, WALES



**SMART REFERENCE LIST | SMART SELF-DRYING CABIN 500 KW 2016/  
SMART SELF-DRYING KINGSPAN PANEL CABIN 500 KW 2017**

MULTI-FUEL SILO DESIGN WITH HYDRAULIC ROOF WITH AUTOMATIC DRYING SILO FLOOR WITH COMPLETE REGULATION  
DRYING FACILITY, AMMANDFORD, WALES



SPECIAL CONTAINERISED 500KW BOILER ROOM, DIMENSIONS 3,2 X 3 X 10,5 M, WOODCHIP FUEL SILO LOCATED INSIDE THE ADJACENT DRYER SHED, 200 KW WOODCHIP DRYING FLOOR WITH HYDRAULIC LOADING RAMP, 4 HEATING CIRCUITS; POULTRY SHED, WOODCHIP/GRAIN DRYER, WORKSHOP AND FARMHOUSE, COMPLETE WITH AUTOMATIC CONTROLS AND REMOTE WEB/ICLOUD MONITORING, LOCATED, SCONE, PERTH, SCOTLAND





# SMART HEATING TECHNOLOGY

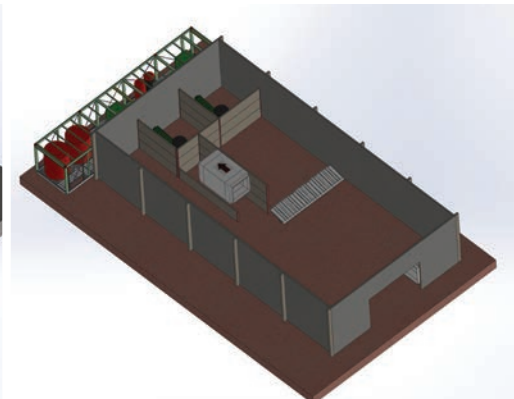
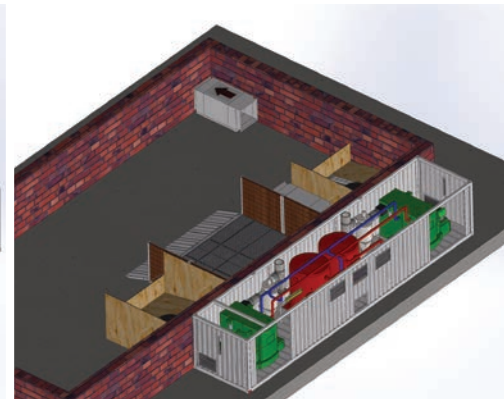
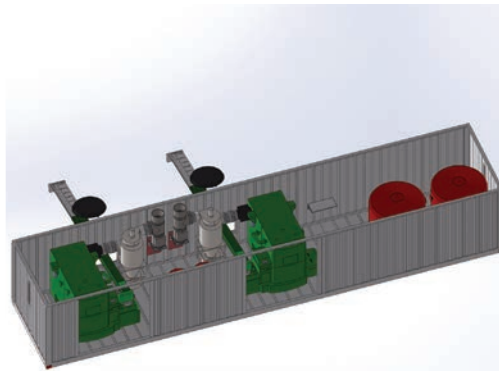
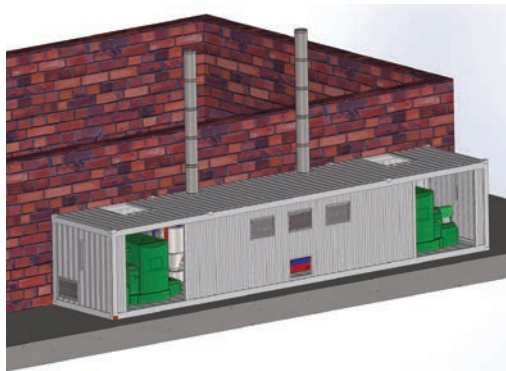
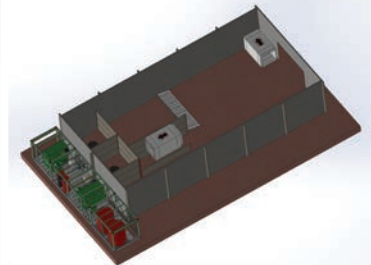
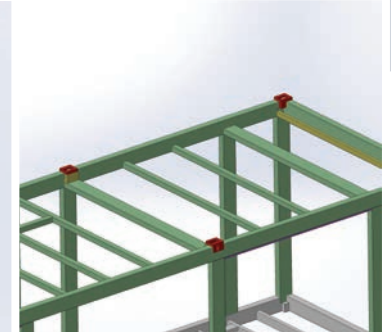
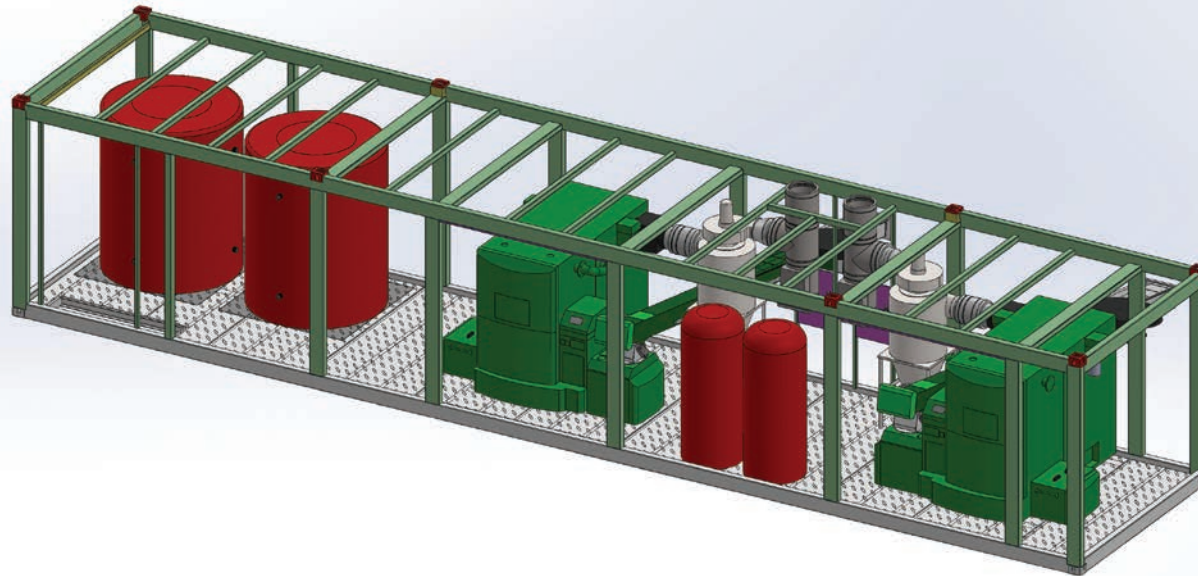
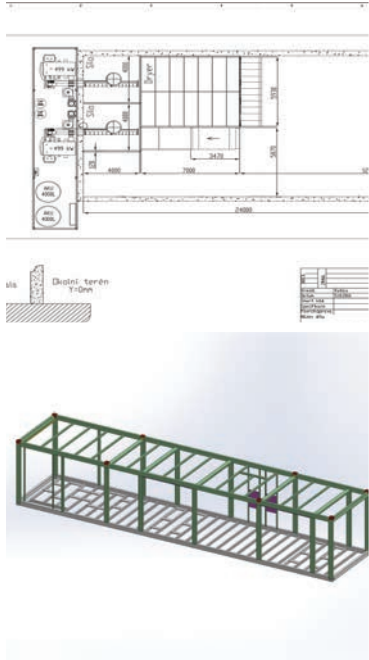
## SMART HEATING TECHNOLOGY SMART REFERENCE LIST | SMART MICRO CABIN 500 KW WITH SMART WOODCHIP/GRAIN DRYER

SPECIAL CONTAINERISED 500KW BOILER ROOM, DIMENSIONS 3,2 X 3 X 10,5 M, WOODCHIP FUEL SILO LOCATED INSIDE THE ADJACENT DRYER SHED, 200 KW WOODCHIP DRYING FLOOR WITH HYDRAULIC LOADING RAMP, 4 HEATING CIRCUITS; POULTRY SHED, WOODCHIP/GRAIN DRYER, WORKSHOP AND FARMHOUSE, COMPLETE WITH AUTOMATIC CONTROLS AND REMOTE WEB/ICLOUD MONITORING, LOCATED, SCONE, PERTH, SCOTLAND





SPECIAL CONTAINERISED 2X 500KW BOILER ROOM, DIMENSIONS 3,2 X 3 X 15,5 M, WOODCHIP FUEL SILO LOCATED INSIDE THE ADJACENT DRYER SHED, 300 KW WOODCHIP DRYING FLOOR WITH HYDRAULIC LOADING RAMP, 200KW DRYING CONTAINER, 6 HEATING CIRCUITS; WOODCHIP/GRAIN DRYER, DRYING CONTAINER, WORKSHOP, FARMHOUSE, HOUSE AND COTTAGE, COMPLETE WITH AUTOMATIC CONTROLS AND REMOTE WEB/ICLOUD MONITORING, LOCATED, GLENFARG, PERTH, SCOTLAND







SPECIAL CONTAINERISED 2X 500KW BOILER ROOM, DIMENSIONS 3,2 X 3 X 15,5 M, WOODCHIP FUEL SILO LOCATED INSIDE THE ADJACENT DRYER SHED, 300 KW WOODCHIP DRYING FLOOR WITH HYDRAULIC LOADING RAMP, 200KW DRYING CONTAINER, 6 HEATING CIRCUITS; WOODCHIP/GRAIN DRYER, DRYING CONTAINER, WORKSHOP, FARMHOUSE, HOUSE AND COTTAGE, COMPLETE WITH AUTOMATIC CONTROLS AND REMOTE WEB/ICLOUD MONITORING, LOCATED, GLENFARG, PERTH, SCOTLAND





# SMART HEATING TECHNOLOGY

## SMART REFERENCE LIST | SMART MAGNUM CABIN 2 X 500 KW WITH SMART WOODCHIP/GRAIN DRYER

SMART HEATING TECHNOLOGY

SPECIAL CONTAINERISED 2X 500KW BOILER ROOM, DIMENSIONS 3,2 X 3 X 15,5 M, WOODCHIP FUEL SILO LOCATED INSIDE THE ADJACENT DRYER SHED, 300 KW WOODCHIP DRYING FLOOR WITH HYDRAULIC LOADING RAMP, 200KW DRYING CONTAINER, 6 HEATING CIRCUITS; WOODCHIP/GRAIN DRYER, DRYING CONTAINER, WORKSHOP, FARMHOUSE, HOUSE AND COTTAGE, COMPLETE WITH AUTOMATIC CONTROLS AND REMOTE WEB/ICLOUD MONITORING, LOCATED, GLENFARG, PERTH, SCOTLAND





# SMART HEATING TECHNOLOGY

## SMART HEATING TECHNOLOGY SMART REFERENCE LIST | SMART MAGNUM CABIN 2 X 500 KW WITH SMART WOODCHIP/GRAIN DRYER

SPECIAL CONTAINERISED 2X 500KW BOILER ROOM, DIMENSIONS 3,2 X 3 X 15,5 M, WOODCHIP FUEL SILO LOCATED INSIDE THE ADJACENT DRYER SHED, 300 KW WOODCHIP DRYING FLOOR WITH HYDRAULIC LOADING RAMP, 200KW DRYING CONTAINER, 6 HEATING CIRCUITS; WOODCHIP/GRAIN DRYER, DRYING CONTAINER, WORKSHOP, FARMHOUSE, HOUSE AND COTTAGE, COMPLETE WITH AUTOMATIC CONTROLS AND REMOTE WEB/ICLOUD MONITORING, LOCATED, GLENFARG, PERTH, SCOTLAND





# SMART HEATING TECHNOLOGY

## SMART REFERENCE LIST | SMART MAGNUM CABIN 2 X 500 KW WITH SMART WOODCHIP/GRAIN DRYER

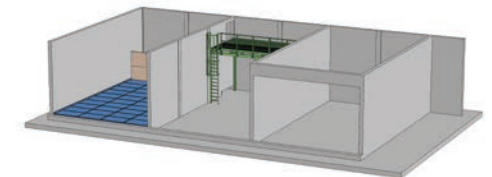
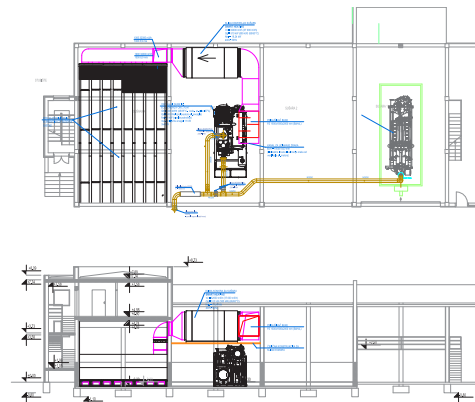
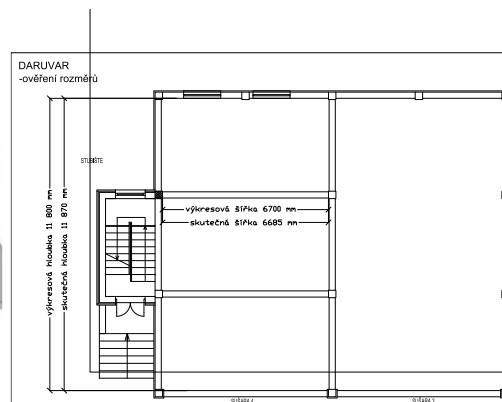
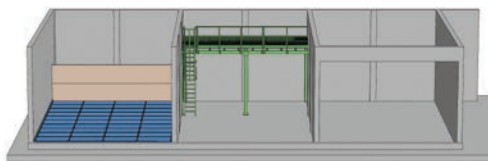
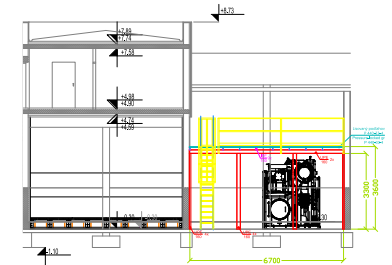
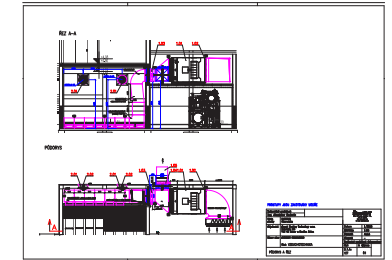
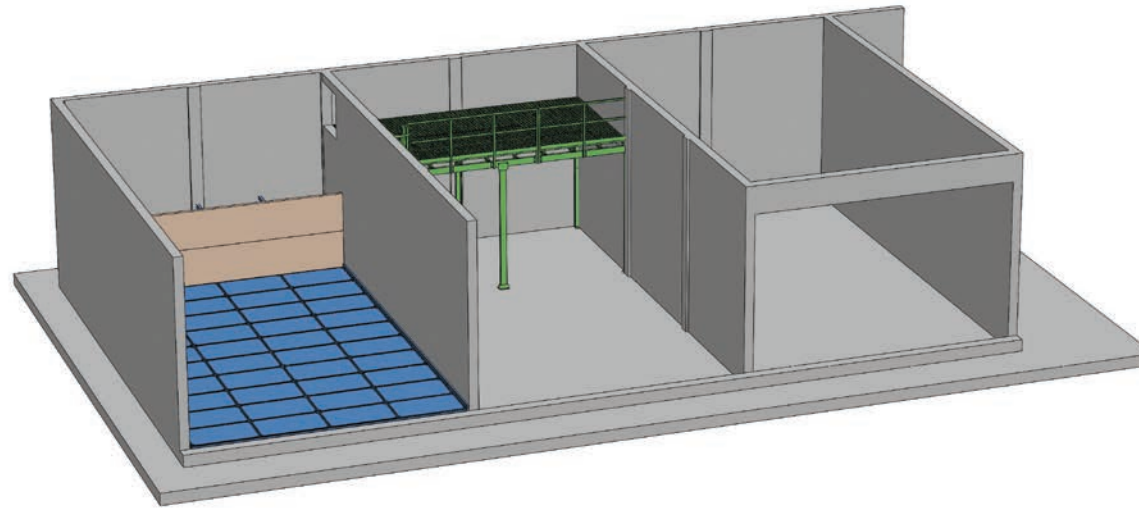
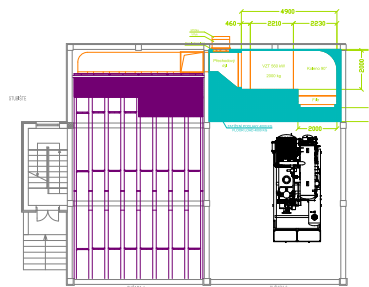
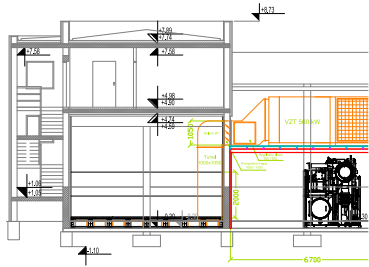
SMART HEATING TECHNOLOGY

SPECIAL CONTAINERISED 2X 500KW BOILER ROOM, DIMENSIONS 3,2 X 3 X 15,5 M, WOODCHIP FUEL SILO LOCATED INSIDE THE ADJACENT DRYER SHED, 300 KW WOODCHIP DRYING FLOOR WITH HYDRAULIC LOADING RAMP, 200KW DRYING CONTAINER, 6 HEATING CIRCUITS; WOODCHIP/GRAIN DRYER, DRYING CONTAINER, WORKSHOP, FARMHOUSE, HOUSE AND COTTAGE, COMPLETE WITH AUTOMATIC CONTROLS AND REMOTE WEB/ICLOUD MONITORING, LOCATED, GLENFARG, PERTH, SCOTLAND



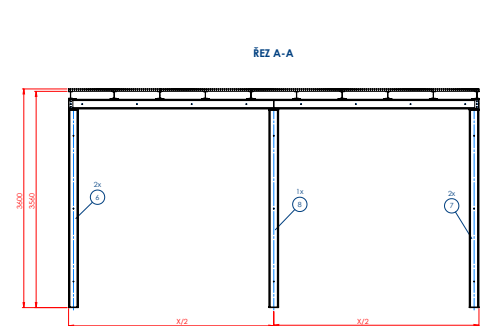
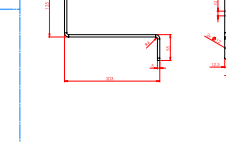
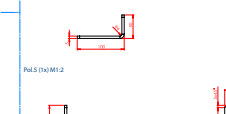
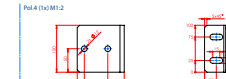
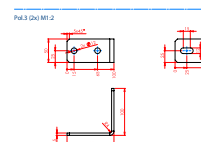
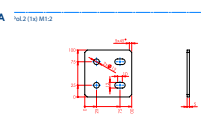
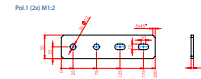
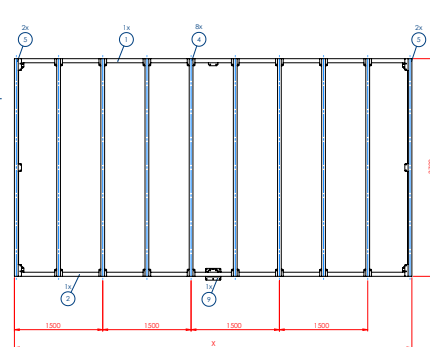
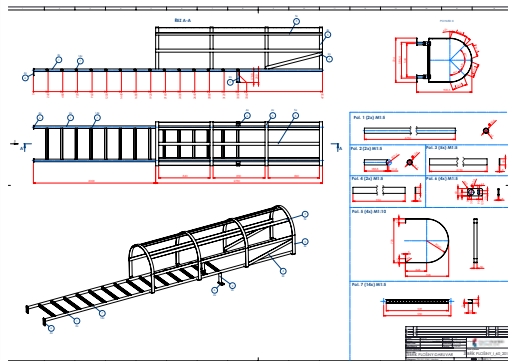
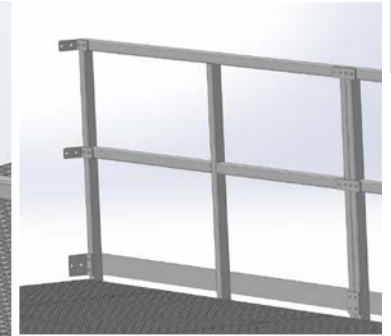
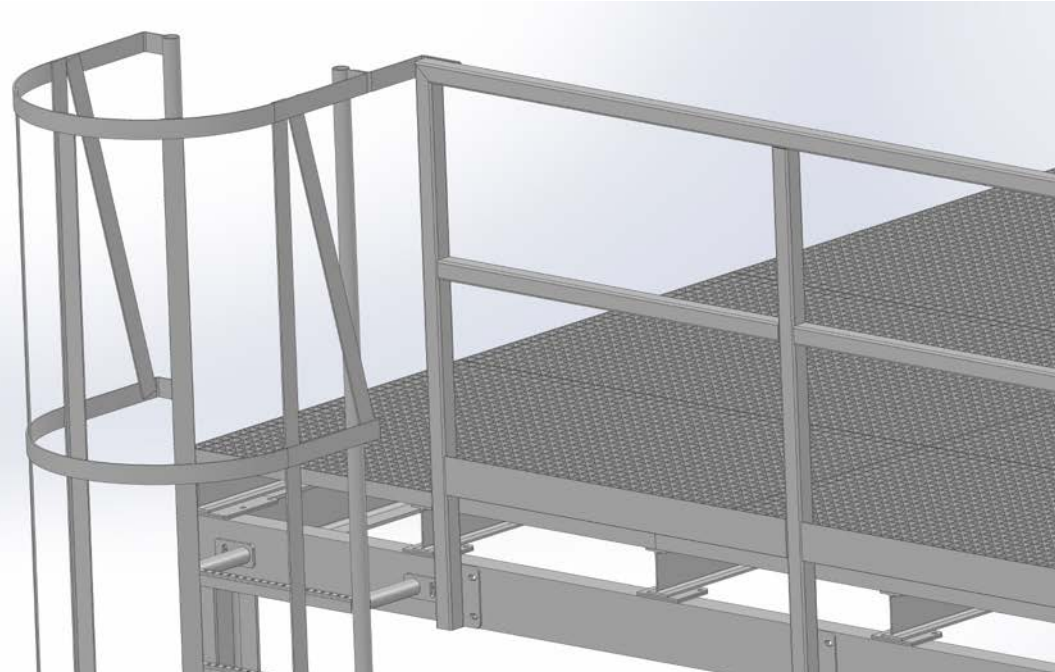
### SMART REFERENCE LIST | SMART WOOD CHIPS DRYER 560 KW

SMART HOT-WATER – HOT-AIR AIR HANDLING UNIT 560 KW, AIR FLOW 32 000 M<sup>3</sup>/H, AIR TEMPERATURE WORKING RANGE 30/81,4°C, WATER FLOW 26,01 M<sup>3</sup>/H, WATER TEMPERATURE WORKING RANGE 85/65°C, ETHYLENE-GLYCOL MIXTURE 30%, 13 120 MM X 5 995 MM GALVANIZED STEEL STRUCTURE, 10 TONS / M<sup>2</sup> DYNAMIC WEIGHT CAPACITY, SPECIAL PERFORATED PLATES, CORNER PLATES, WALL PROTECTION BARRIERS, MOISTURE-EXHAUSTING WALL FANS, WITH SILENCERS FOR 35DB, FIRE-PROOF FLAPS, TEMPERATURE SENSORS, MOISTURE SENSORS, REMOTE ICLLOUD MONITORING DARUVAR, CROATIA



**SMART REFERENCE LIST | SMART WOOD CHIPS DRYER 560 KW**

SMART HOT-WATER – HOT-AIR AIR HANDLING UNIT 560 KW, AIR FLOW 32 000 M<sup>3</sup>/H, AIR TEMPERATURE WORKING RANGE 30/81,4°C, WATER FLOW 26,01 M<sup>3</sup>/H, WATER TEMPERATURE WORKING RANGE 85/65°C, ETHYLENE-GLYCOL MIXTURE 30%, 13 120 MM X 5 995 MM GALVANIZED STEEL STRUCTURE, 10 TONS / M<sup>2</sup> DYNAMIC WEIGHT CAPACITY, SPECIAL PERFORATED PLATES, CORNER PLATES, WALL PROTECTION BARRIERS, MOISTURE-EXHAUSTING WALL FANS, WITH SILENCERS FOR 35DB, FIRE-PROOF FLAPS, TEMPERATURE SENSORS, MOISTURE SENSORS, REMOTE ICLLOUD MONITORING DARUVAR, CROATIA



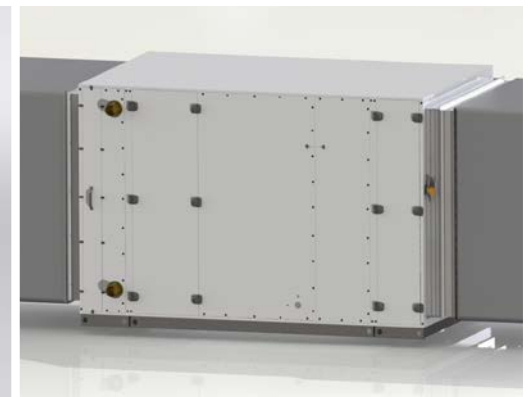
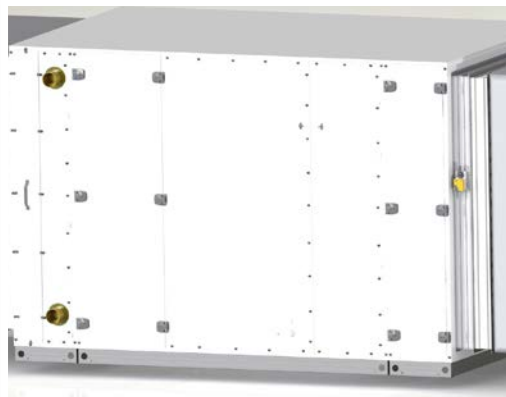
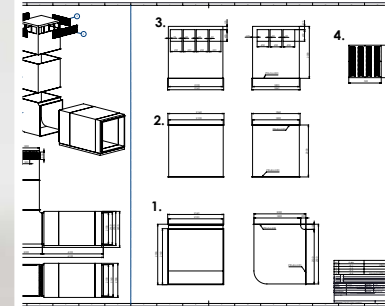
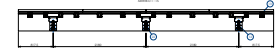
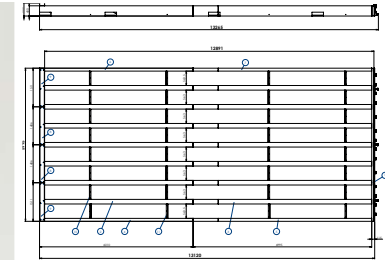
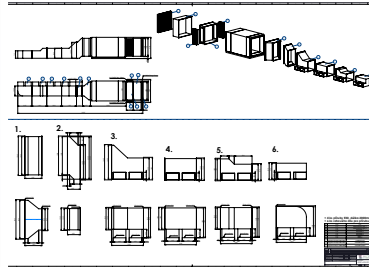
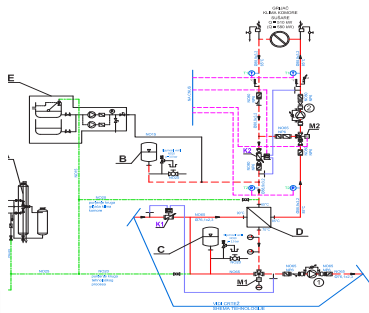
## SMART REFERENCE LIST | SMART WOOD CHIPS DRYER 560 KW

SMART HOT-WATER – HOT-AIR AIR HANDLING UNIT 560 KW, AIR FLOW 32 000 M<sup>3</sup>/H, AIR TEMPERATURE WORKING RANGE 30/81,4°C, WATER FLOW 26,01 M<sup>3</sup>/H, WATER TEMPERATURE WORKING RANGE 85/65°C, ETHYLENE-GLYCOL MIXTURE 30%, 13 120 MM X 5 995 MM GALVANIZED STEEL STRUCTURE, 10 TONS / M<sup>2</sup> DYNAMIC WEIGHT CAPACITY, SPECIAL PERFORATED PLATES, CORNER PLATES, WALL PROTECTION BARRIERS, MOISTURE-EXHAUSTING WALL FANS, WITH SILENCERS FOR 35DB, FIRE-PROOF FLAPS, TEMPERATURE SENSORS, MOISTURE SENSORS, REMOTE ICLLOUD MONITORING DARUVAR, CROATIA



**SMART REFERENCE LIST | SMART WOOD CHIPS DRYER 560 KW**

SMART HOT-WATER – HOT-AIR AIR HANDLING UNIT 560 KW, AIR FLOW 32 000 M<sup>3</sup>/H, AIR TEMPERATURE WORKING RANGE 30/81,4°C, WATER FLOW 26,01 M<sup>3</sup>/H, WATER TEMPERATURE WORKING RANGE 85/65°C, ETHYLENE-GLYCOL MIXTURE 30%, 13 120 MM X 5 995 MM GALVANIZED STEEL STRUCTURE, 10 TONS / M<sup>2</sup> DYNAMIC WEIGHT CAPACITY, SPECIAL PERFORATED PLATES, CORNER PLATES, WALL PROTECTION BARRIERS, MOISTURE-EXHAUSTING WALL FANS, WITH SILENCERS FOR 35DB, FIRE-PROOF FLAPS, TEMPERATURE SENSORS, MOISTURE SENSORS, REMOTE ICLLOUD MONITORING DARUVAR, CROATIA







### SMART REFERENCE LIST | SMART WOOD CHIPS DRYER 560 KW

SMART HOT-WATER – HOT-AIR AIR HANDLING UNIT 560 KW, AIR FLOW 32 000 M<sup>3</sup>/H, AIR TEMPERATURE WORKING RANGE 30/81,4°C, WATER FLOW 26,01 M<sup>3</sup>/H, WATER TEMPERATURE WORKING RANGE 85/65°C, ETHYLENE-GLYCOL MIXTURE 30%, 13 120 MM X 5 995 MM GALVANIZED STEEL STRUCTURE, 10 TONS / M<sup>2</sup> DYNAMIC WEIGHT CAPACITY, SPECIAL PERFORATED PLATES, CORNER PLATES, WALL PROTECTION BARRIERS, MOISTURE-EXHAUSTING WALL FANS, WITH SILENCERS FOR 35DB, FIRE-PROOF FLAPS, TEMPERATURE SENSORS, MOISTURE SENSORS, REMOTE ICLLOUD MONITORING DARUVAR, CROATIA





### SMART REFERENCE LIST | SMART WOOD CHIPS DRYER 560 KW

SMART HOT-WATER – HOT-AIR AIR HANDLING UNIT 560 KW, AIR FLOW 32 000 M<sup>3</sup>/H, AIR TEMPERATURE WORKING RANGE 30/81,4°C, WATER FLOW 26,01 M<sup>3</sup>/H, WATER TEMPERATURE WORKING RANGE 85/65°C, ETHYLENE-GLYCOL MIXTURE 30%, 13 120 MM X 5 995 MM GALVANIZED STEEL STRUCTURE, 10 TONS / M<sup>2</sup> DYNAMIC WEIGHT CAPACITY, SPECIAL PERFORATED PLATES, CORNER PLATES, WALL PROTECTION BARRIERS, MOISTURE-EXHAUSTING WALL FANS, WITH SILENCERS FOR 35DB, FIRE-PROOF FLAPS, TEMPERATURE SENSORS, MOISTURE SENSORS, REMOTE ICLLOUD MONITORING DARUVAR, CROATIA





### SMART REFERENCE LIST | SMART WOOD CHIPS DRYER 560 KW

SMART HOT-WATER – HOT-AIR AIR HANDLING UNIT 560 KW, AIR FLOW 32 000 M<sup>3</sup>/H, AIR TEMPERATURE WORKING RANGE 30/81,4°C, WATER FLOW 26,01 M<sup>3</sup>/H, WATER TEMPERATURE WORKING RANGE 85/65°C, ETHYLENE-GLYCOL MIXTURE 30%, 13 120 MM X 5 995 MM GALVANIZED STEEL STRUCTURE, 10 TONS / M<sup>2</sup> DYNAMIC WEIGHT CAPACITY, SPECIAL PERFORATED PLATES, CORNER PLATES, WALL PROTECTION BARRIERS, MOISTURE-EXHAUSTING WALL FANS, WITH SILENCERS FOR 35DB, FIRE-PROOF FLAPS, TEMPERATURE SENSORS, MOISTURE SENSORS, REMOTE ICLOUD MONITORING  
DARUVAR, CROATIA





### SMART REFERENCE LIST | SMART WOOD CHIPS DRYER 560 KW

SMART HOT-WATER – HOT-AIR AIR HANDLING UNIT 560 KW, AIR FLOW 32 000 M<sup>3</sup>/H, AIR TEMPERATURE WORKING RANGE 30/81,4°C, WATER FLOW 26,01 M<sup>3</sup>/H, WATER TEMPERATURE WORKING RANGE 85/65°C, ETHYLENE-GLYCOL MIXTURE 30%, 13 120 MM X 5 995 MM GALVANIZED STEEL STRUCTURE, 10 TONS / M<sup>2</sup> DYNAMIC WEIGHT CAPACITY, SPECIAL PERFORATED PLATES, CORNER PLATES, WALL PROTECTION BARRIERS, MOISTURE-EXHAUSTING WALL FANS, WITH SILENCERS FOR 35DB, FIRE-PROOF FLAPS, TEMPERATURE SENSORS, MOISTURE SENSORS, REMOTE ICLLOUD MONITORING DARUVAR, CROATIA

